

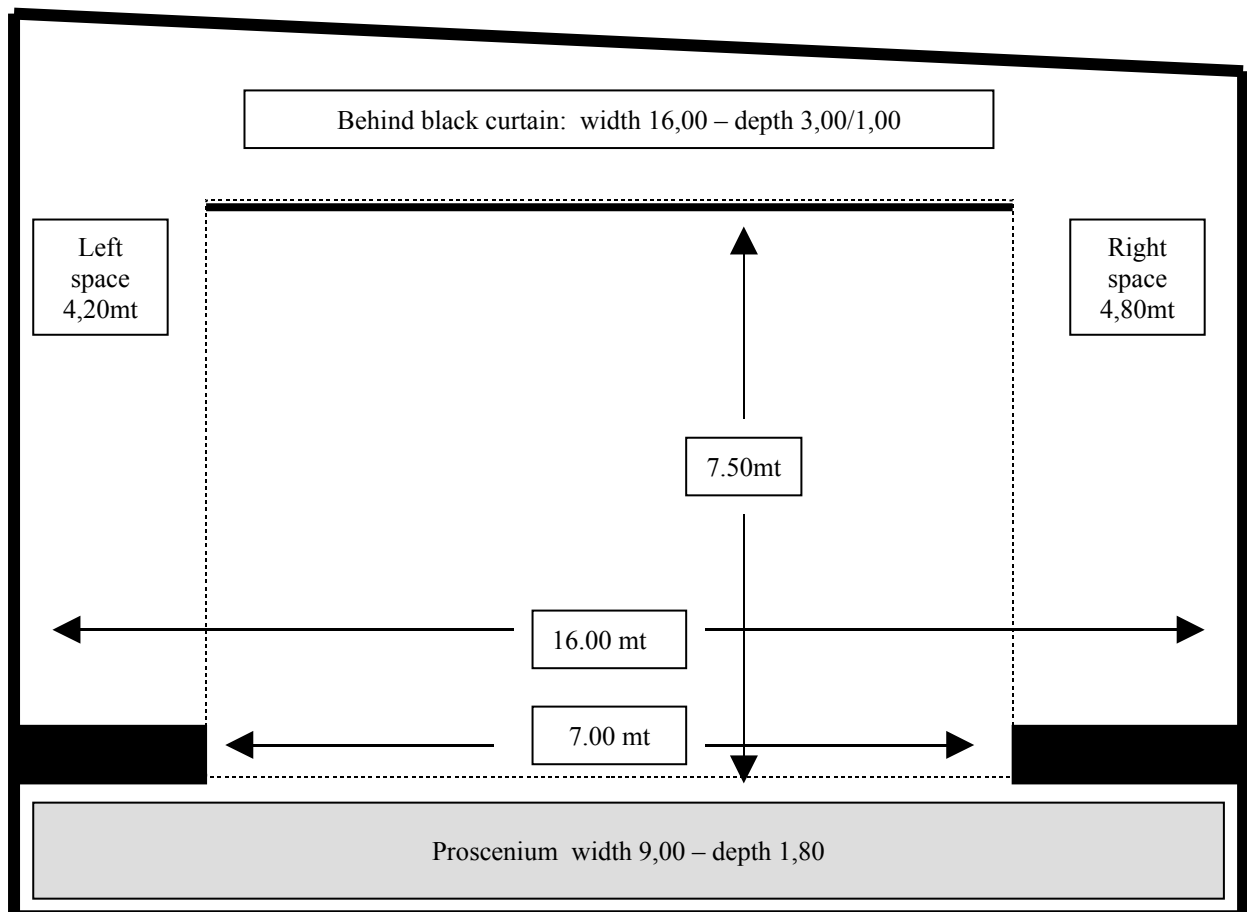
PUPI e FRESEDDI
TEATRO DI RIFREDI
TEATRO STABILE DI INNOVAZIONE - FIRENZE

Via V. Emanuele, 303 - 50134 FIRENZE
 T. +39 0554220361/2 - F. +39 0554221453
 www.toscanateatro.it - staff@toscanateatro.it

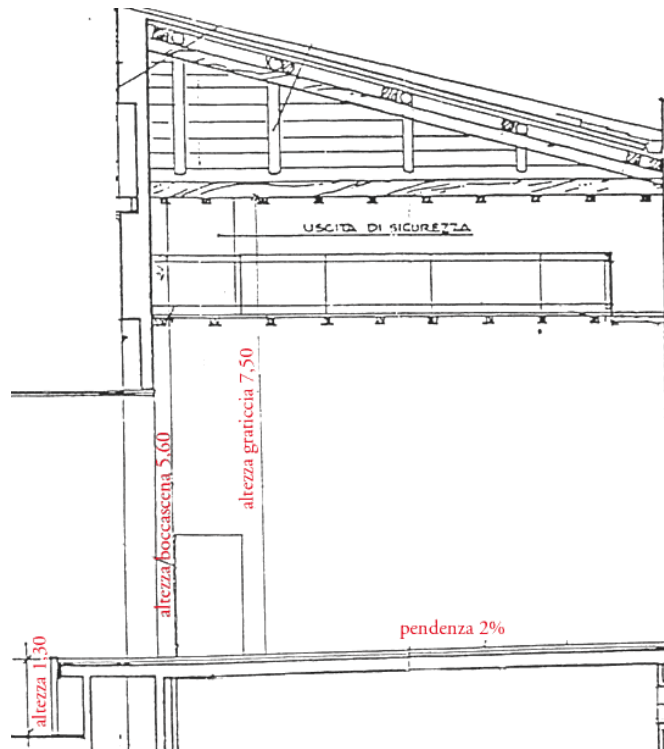
Specifications:

Stage set:

"boccascena" (front of the stage)	width 7,00 – vertical height 5,60
Total stage	width 16 – vertical height 7,20/7,50 – depth 9,00
proscenium	width 9,00 depth 1,80
climb	2%
Red curtain	Handmade motion
Black curtains	present



VERTICAL VIEW:



Electric power	45KW
loading/unloading	right on the stage
dressings rooms	3
size	3,50x2,50
services	shower

Light bars:

1 light bar fixed on the roof at 1,80mt from the proscenium
4 light bars on the stage

Tecnical staff: Lorenzo Belli – Henry Banzi (tecnici@toscanateatro.it)